



**GIG** Instytut  
Badawczy

## OPI-TPP 2.0 SYSTEM

EXPANSION OF THE SYSTEM FOR MANAGEMENT OF  
POST- MINING AREAS IN THE SILESIA VOIVODESHIP

August 13, 2022



HR EXCELLENCE IN RESEARCH



Fundusze  
Europejskie  
Program Regionalny



Rzeczpospolita  
Polska



Śląskie.

Unia Europejska  
Europejski Fundusz  
Rozwoju Regionalnego





January 2020 - March 2023

## PARTNERSHIP



Województwo  
Śląskie

## FUNDING

The European Regional Development Fund under The Regional Programme of the Silesian Voivodeship for 2014-2020.

Measure 2.1 Support for the development of digital public services.



Rzeczpospolita  
Polska



Unia Europejska  
Europejski Fundusz  
Rozwoju Regionalnego



## THE AIM OF THE PROJECT

Development and implementation of a new e-service in the form of an open-access information system regarding post-mining areas in the Silesian Voivodeship.



## OPI-TPP 2.0 SYSTEM PROVIDES ACCESS TO:

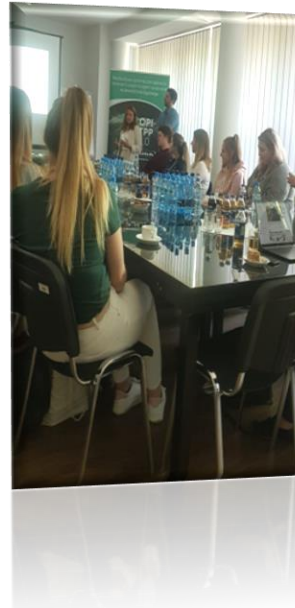
- ❑ catalogued information about post-industrial sites with a special focus on mining areas in the form of a database, GIS information layer, individual reports.
- ❑ catalogued documents in digital form (digital repository) → scans of documents, photographs, drawings, 3D models.
- ❑ tools for assessing the attractiveness of post-mining areas (investment, ecosystem, cost):
  - ❑ attributes in the database.
  - ❑ separate tool for individual analysis.
- ❑ tool for benchmarking of post-mining areas.



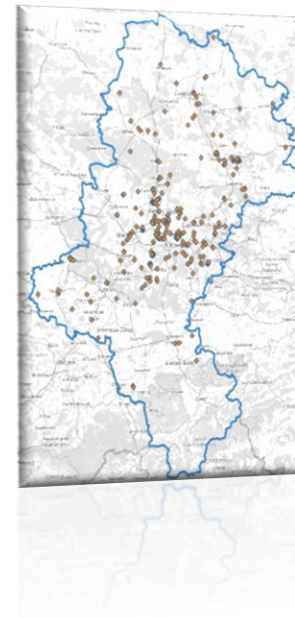
2020



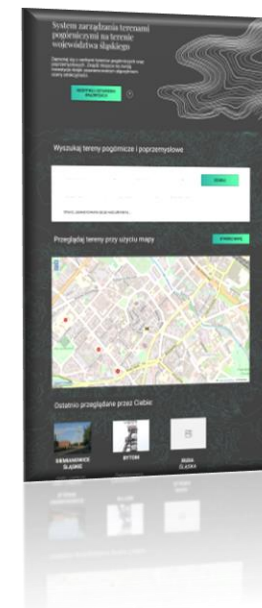
2021



2022



2023



- site data collection,
- digitalization of documents,
- meetings with stakeholders,
- database construction,
- valorisation of post-mining areas,
- developing an information system.

# DATABASES - CURRENT STATE

## POST-MINING AREAS (OF HARD COAL)

- ❑ 334 post-mining areas,
- ❑ areas located within 26 districts,
- ❑ approx. 5 900 ha of areas
- ❑ site types: heaps, shafts, mine buildings, settling ponds, stockyards.



## POST-INDUSTRIAL AREAS (ACTIVITIES OTHER THAN COAL MINING)

- ❑ 290 post-industrial areas,
- ❑ areas located within 32 districts,
- ❑ approx. 4 000 ha of areas



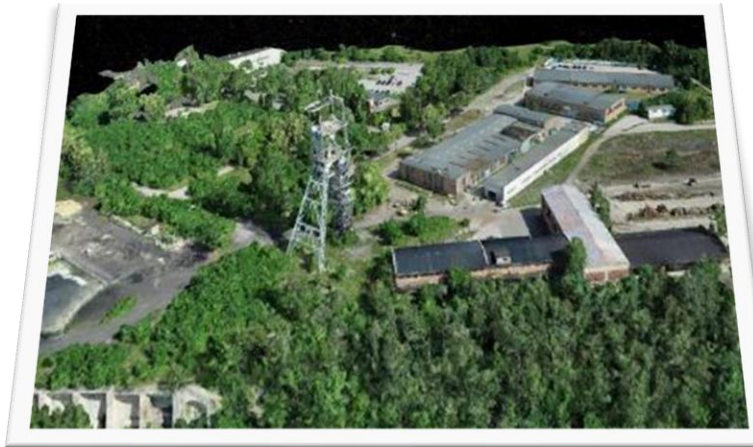
**Currently, the data from the databases are in the final stages of verification and completion by city and municipal offices and areas managers.**



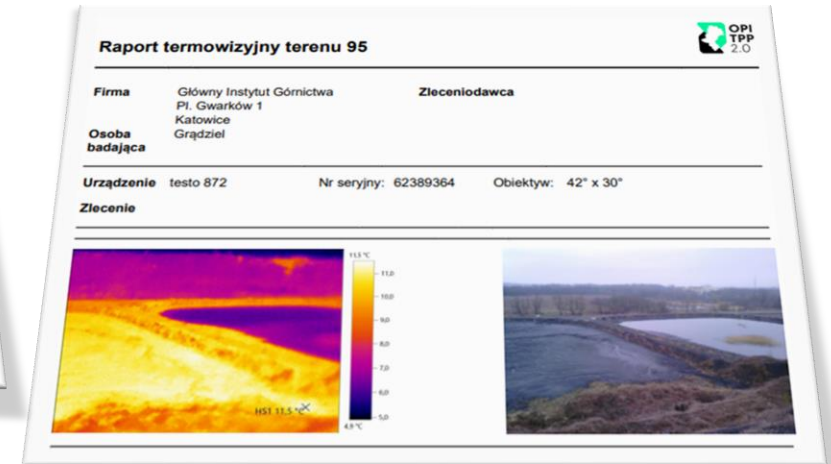
# COMPLETION OF THE DATABASE



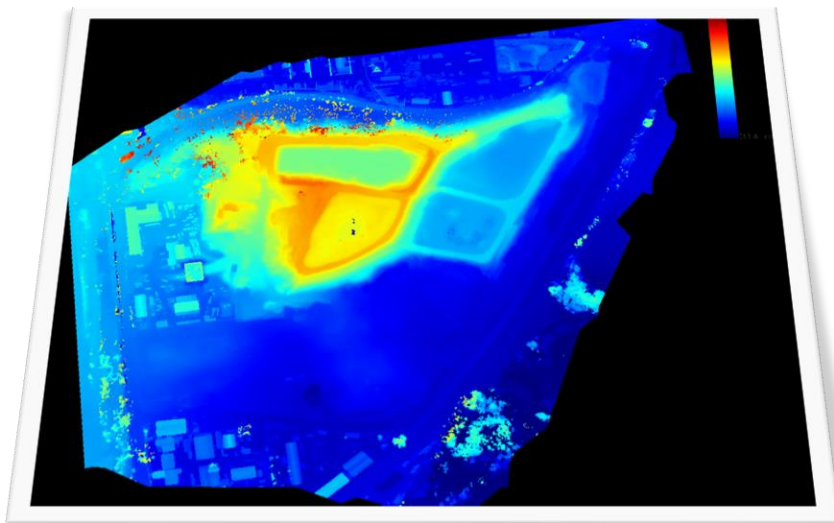
photographs



3D models



thermal analyses



numerical land models



360° spherical views



orthophoto maps



# ENVIRONMENTAL STUDIES





# THE DIGITAL REPOSITORY

## SCANS OF DOCUMENTS

- The main source is the documentation of closed mining plants provided by the State Mining Authority - currently about 40 GB of data have been digitalized,

## PANORAMAS & PHOTOS

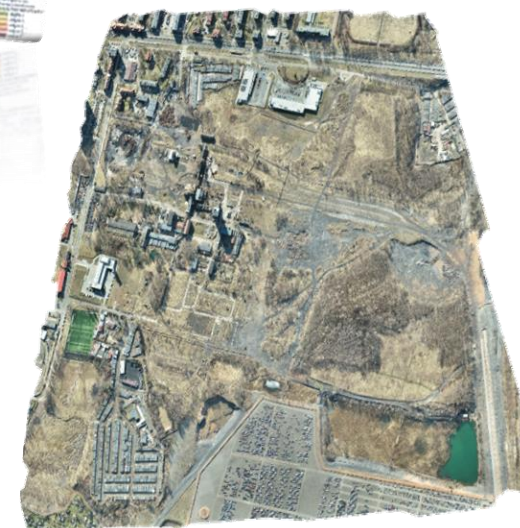
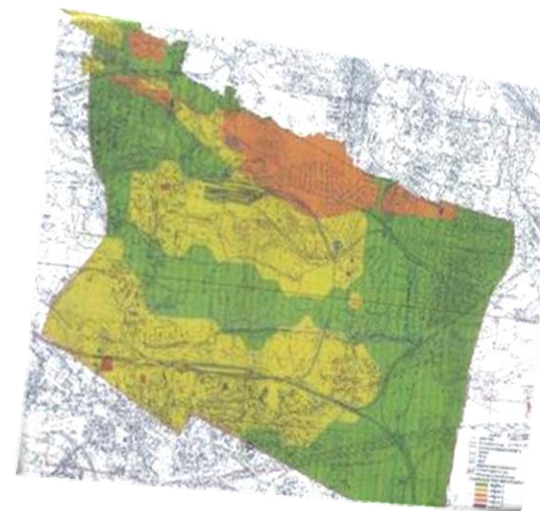
- Updated 360° panorama for each site,
- 4-5 individual photographs for each site,

## MAP COLLAGE FOR EACH AREA

- 1 map fom each area,
- up to 700 pictures in total.

## 3D MODELS

- 3D models for objects with different morphologies.

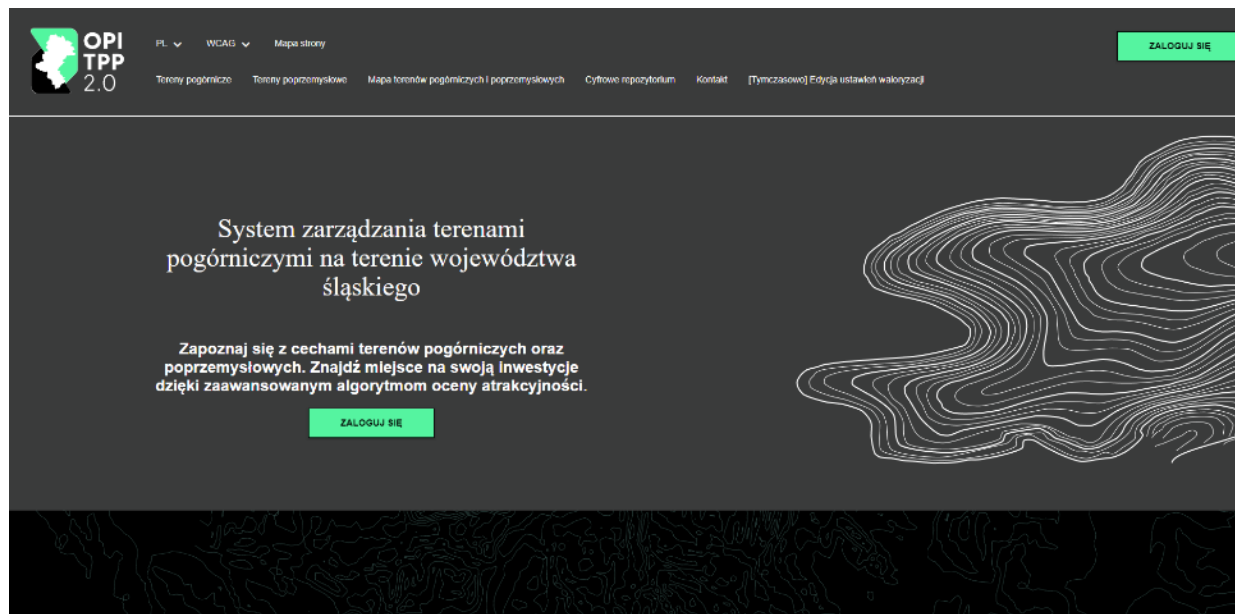




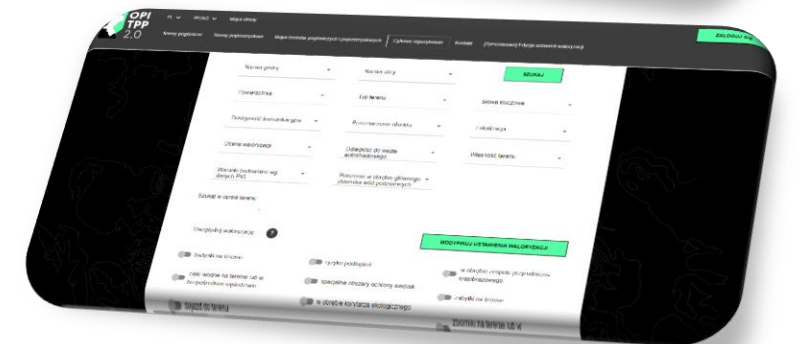
# INFORMATION SYSTEM

- inspired by e-commerce solutions,
- available in Polish and English,
- prepared for stationary and mobile devices,
- no geoportal elements,
- possibility of customization of services,
- intuitive and easy to use.

The information layer with data from OPI-TPP 2.0 database will be available in GIS systems published by WODGiK in Katowice



<https://www.youtube.com/watch?v=0Ajlbo560JE>



# THANK YOU FOR YOUR ATTENTION

**CONTACT:**

dr Adam Hamerla

Project Manager

E: [ahamerla@gig.eu](mailto:ahamerla@gig.eu)

T: +48 (32) 259 22 92

dr inż. Karolina Jąderko-Skubis

E: [kjaderko@gig.eu](mailto:kjaderko@gig.eu)

T: +48 (32) 259 22 96